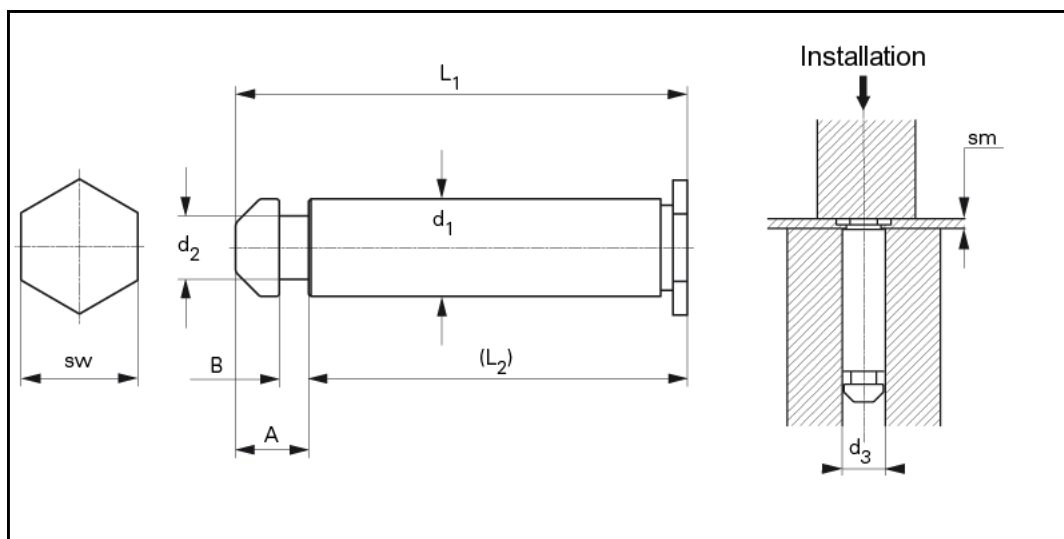


Data sheet - YQE-1492829P

PEM® Einpresstromleitpins



3D-Data available	
Application	Self-clinching flush head studs with X-Press™ threads.
Order description	YQE-1492829P
d1 +0 -0.04	3.6
Hole-Ø in the sheet +0.08 0	3.6 mm
d2 +0 -0.05	2.6 mm
d3	3.7 mm
sw	4.8 mm
Min. sm	1.0 mm
L1 ±0.25	17.8 mm
(L2)	15.6 mm
A ±0,1	2.2 mm
B ±0,05	1.25 mm
Min. edge distance up to the hole centre	3.7 mm
Material	Carbon steel, silverplated.
Use	For sheet hardnesses up to HRB 80.

	Other sizes upon request.
Tools	
Insertion machines	

uniform resource locator: