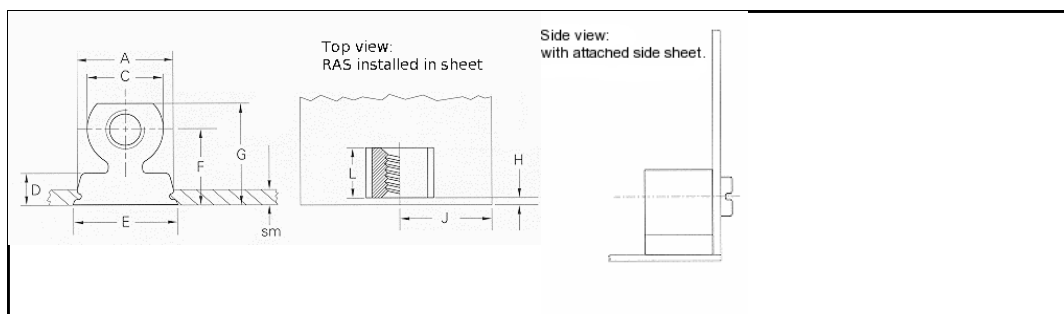


## Data sheet - RAS-M3-7-3

### Right angle clinch fasteners



3D-Data available	
Tread code	M3 x 0.5
Order description	RAS-M3-7-3
A ±0.08	7.89 mm
C nom.	6.35 mm
D nom.	3.18 mm
E ±0.15	9.47 mm
F ±0.15	7 mm
G nom.	9.78 mm
Min. edge distance H	1.02 mm
Min. edge distance J	7.6 mm
Min. sm	1.0 mm
L ±0.08	2.89 mm
Hole size in the sheet +0.05 -0.03	8 x 3 mm
Material	Sintered zinc-plated steel.
Use	For sheet hardnesses up to HRB 60.
Tools	
Insertion machines	

uniform resource locator: